

international

國際新景觀

landscape

new landscape

01/02 2016 No.1 Price: AUD 26 / USD 20 / RMB 58

Topic 專題

Urban Landscape
Renovation
城市景觀重塑



ISBN 978-7-5390-5590-9



9 787539 405590 >

江西科学技术出版社

Publisher X-Color Publishing International

Distributor Yutong Culture Media

Committee Ander Marquet Ryan Andrew Grant Dennis C. McGlade
Gwynne Pugh Juncal Aldamizechevarría González de Durana June Gómez
Alonso Koh Seow Chuan Marion Weiss Mark Dawson Michael Manfredi
Namchai Saensupha Prapan Napawongdee Robert Backhouse
Rozana Montiel Shuichi Murata Susumu Ito
Till Rehwaldt Tilman Latz Yossapon Boonsom

Contributing Editors Allison Wicks Amanda Ellis Ander Marquet Ryan
BONNIE OENI Greg Rodgers Hiromitu Sato Kelly O'Rourke
Rozana Montiel Sahar Coston-Hardy Shuichi Murata Shu Yang
Silke Metzler Tori Madine Ulrike Zaenker

Editor-in-Chief 石璽 Erica

President 林佳藝 Rita

Editor-in-Charge 姜穎 Jenny

English Editors 馬向南 Judy 王潔瓊 Joanna 武艷豔 Anna
石璽 Cindy 黃天淪 Jason

Art Editors 楊翠微 Vivian 吳蕙 Sundy

Marketing Manager 王寶華 Shane

Marketing Assistant 陳惠紅 Tina 車晨 Michelle

Distributing Manager 宋俊 Nancy

Cover Photo 封面圖片提供
LATZ+PARTNER

Australian Office

Addr: 32 Pretoria Road, Seven Hills, NSW 2147, Australia

Post Code: 2147

Tel: 61-2-9631-8820 Fax: 61-2-9621-1888

ISSN 1833-0673

Publishing Date 雙月 Every even month

Price Per Issue AUD 26 USD 20 RMB 58

Chinese Office

Addr: 上海市虹口區天寶路886號天寶商務樓3樓

3rd Floor, Tianbao Office Building, No.886 Tianbao Road

Hongkou District, Shanghai, China Post Code: 200086

Tel / Fax: 86-21-65751314/65751814

E-mail: info@internationalnewlandscape.com

URL: www.internationalnewlandscape.com

Cooperative Company **協辦單位**

上海市園林設計院有限公司

Media Link **媒體支持**



Membership Companies & Associations **成員單位**

EADG泛亞國際

澳大利亞·柏濤景觀

American Society of Landscape Architects ASLA

安道Antao

普利斯設計集團股份有限公司

ANTO-GROUP 岩濤景觀

水石國際

秦秦園林景觀規劃設計研究院

山水比德園林集團

Supportive Companies & Associations **理事單位**

成都易中景設計諮詢有限公司

香港城設園林設計有限公司

重慶尚源建築景觀設計有限公司

浙江晶日照明科技有限公司

上海廣啟景觀設計有限公司

希爾 (英國) 景觀設計有限公司

Weibo **微博** 國際新景觀

Wechat **微信** 國際新景觀 In-I

設計傳媒 design-media

Membership Companies & Associations **成員單位**

美國YPA·北半球景觀設計公司

北京麥田國際景觀規劃設計事務所

Private plots & public spots

GVL怡境國際設計集團

美國僑禾景觀規劃設計有限公司

MPG摩高景觀

深圳源創易景觀設計有限公司

上海貝倫漢斯景觀建築設計工程有限公司

Supportive Companies & Associations **理事單位**

深圳市萬濤環境藝術設計有限公司

上海鼎視環境設計有限公司

深圳市何小強景觀設計有限公司

重慶藍調城市景觀規劃設計有限公司

Holland NITA Design Group (荷蘭NITA設計集團)

上海億華機電設計事務所

Subscription Online **本書網絡訂閱**

設計傳媒 www.design-media.cn

www.internationalnewlandscape.com

蜘蛛網 www.spider.com.cn

我得雜誌網 www.myzazhi.cn

Contents 目錄

141 中創環亞·都市營造
Zhongchuanhuanaya Urban Creation Studio

126 景觀畫報 Landscape Architecture Pictorial
原創·生態·清雅——高野景觀設計
Original, ecological and elegant—TAKANO
LANDSCAPE PLANNING Co., Ltd

景觀設計師 Landscape Architects

116 鐵與木的合奏——簕音公寓銷售長廊
The Line Condominium Sales Gallery

104 英國劍橋協和建築
Accordia, Cambridge, UK

094 巴納德學院黛安娜中心
The Diana Center at Barnard College

088 衝繩MAHAINA酒店康復度假村
HOTEL MAHAINA WELLNESS RESORT
OKINAWA

景觀實踐 Practice

078 美國磨河公園和綠道
Mill River Park and Greenway

070 全天候與全民化——Seef Lusail 濱水區
SEEF LUSAIL MASTER PLAN
A waterfront for everyday and everybody

景觀規劃 Planning

064 Indautxu廣場
Indautxu Square

058 加州長灘城市復興
Urban Revitalization in Long Beach, CA

046 埃門拉德休斯廣場
Raadhuisplein, Emmen

040 聯合社區
Common-Unity

030 澳大利亞珀斯城布魯克菲爾德廣場
Brookfield Place

022 D街草坪
The Lawn on D

專題 Topic

012 美洲、歐洲、亞洲、澳洲最新行業動態
America, Europe, Asia, Australia

景觀新干綫 News

004 城市景觀的重生
The Regeneration of Urban Landscape

卷首語 Editor's Note

360° 企業秀：貝倫漢斯景觀國際
360° Company: Behrenhans Landscape
Designing & Engineering Company

人物 Designer

插頁



Common-Unity | 聯合社區 |

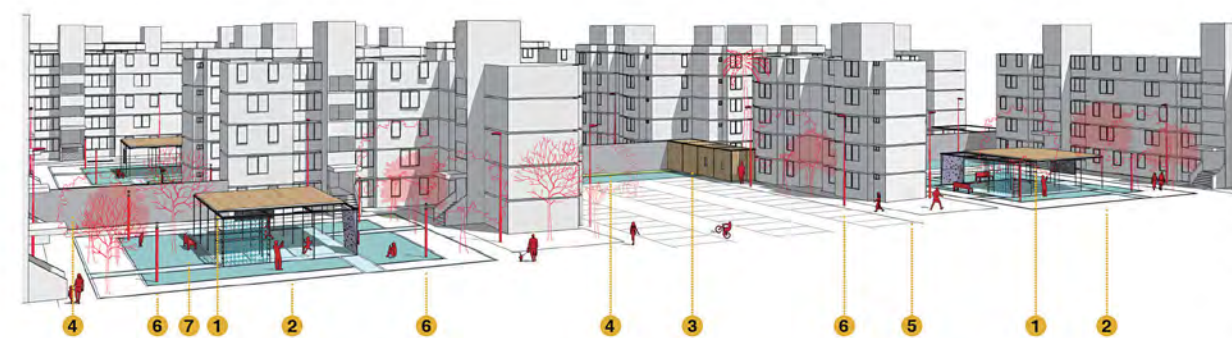
Rozana Montiel | Estudio de Arquitectura

建而成，這裏活動設施豐富：黑板、攀爬牆、欄杆和鐵網，遠遠優于原有的設施。改造后的公共空間成為了公寓的延伸空間，設計戰略最終被證明是非常有效的：居民們團結起來為單元樓的重新設計貢獻力量，響應社區要求拆除

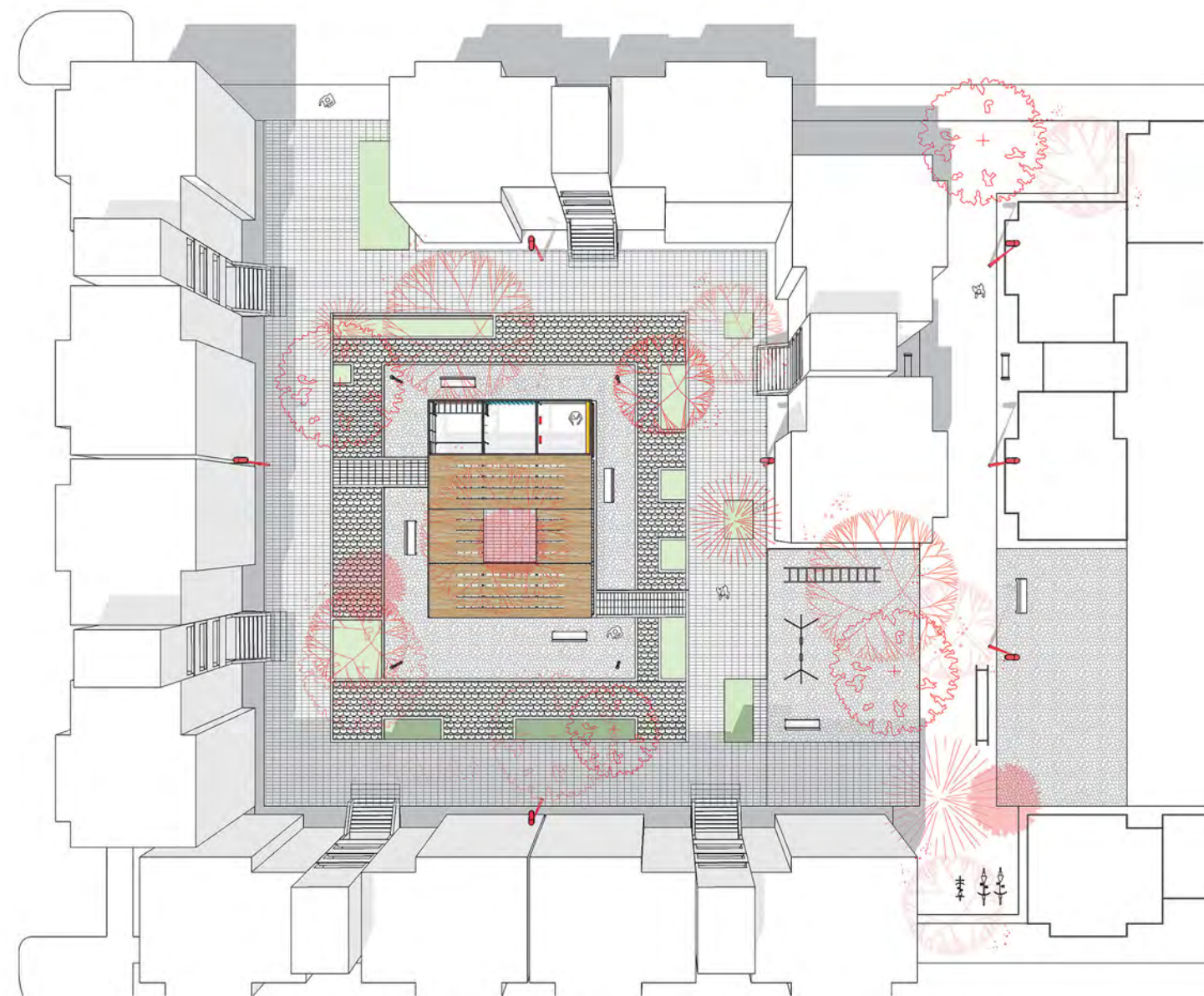
了搭建的柵欄。設計后的空間創造了良好的效應，單元樓的居民決定移除所有的屏障，享受外部空間帶來的樂趣，用公共生活來充實自己。



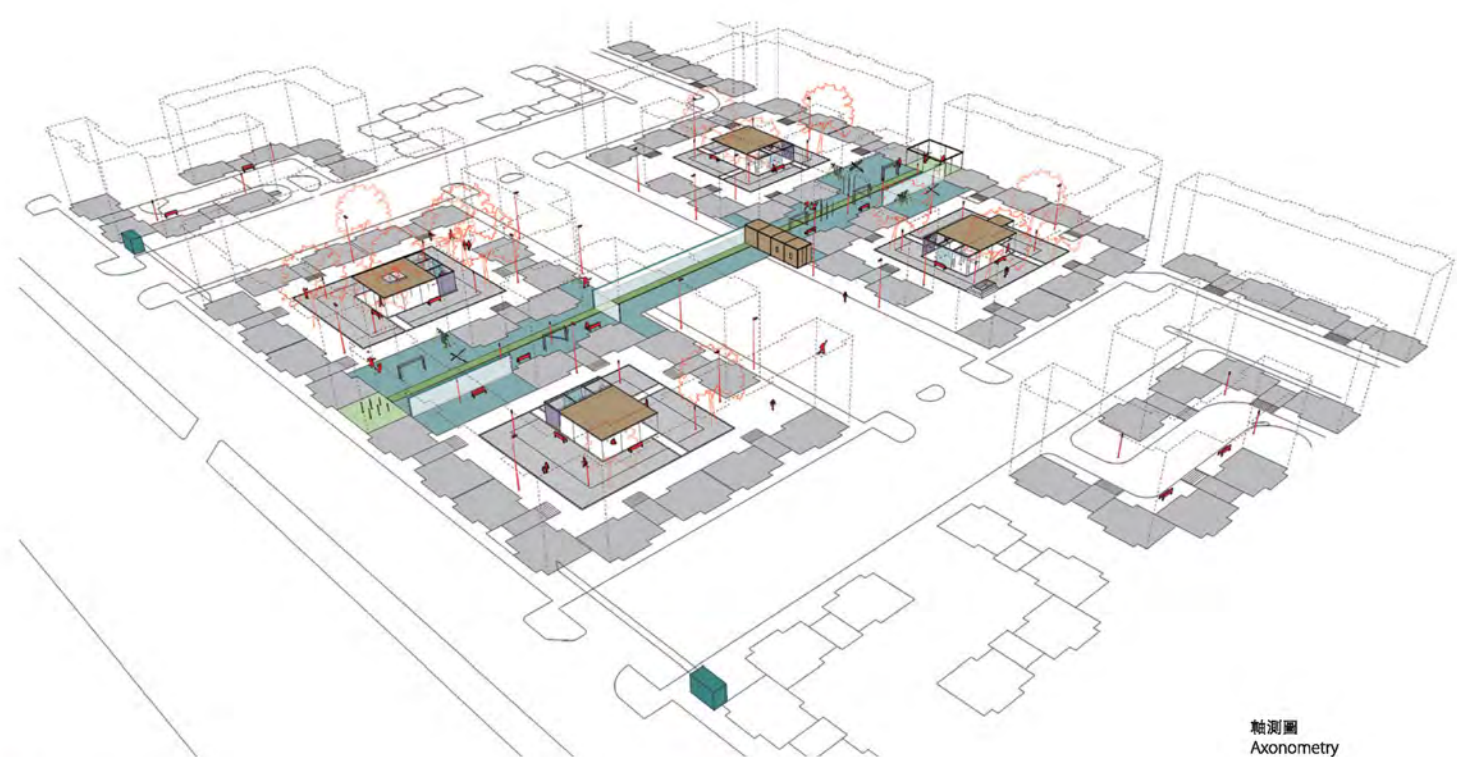
聯合社區是San Pablo Xalpa住宅區的公共空間改造項目，場地于墨西哥城阿斯卡波察爾科。在過去的一段時間裏，這裏的居民不斷搭建圍牆、柵欄和屏障，將住區分割成好幾個部分，造成了社區可用公共開放空間的缺失。項目不僅對社區實施修復工作，還將“分離的公寓單元區”轉變成“聯結的公共社區”。項目策略是將之前增建的屏障融合到設計中，統一化，并賦予新的意義，從而在單元住宅區創造連接為一體的社區。過去，不同區域的居民為了擴大私人區域，會在公共區域重復地搭建臨時性覆蓋物，比如用于社交聚會的防水油布。通過解決這些障礙物，設計師努力創造特定的空間，用作居民的娛樂和社交。附有屋頂的廊道空間由模塊結構構



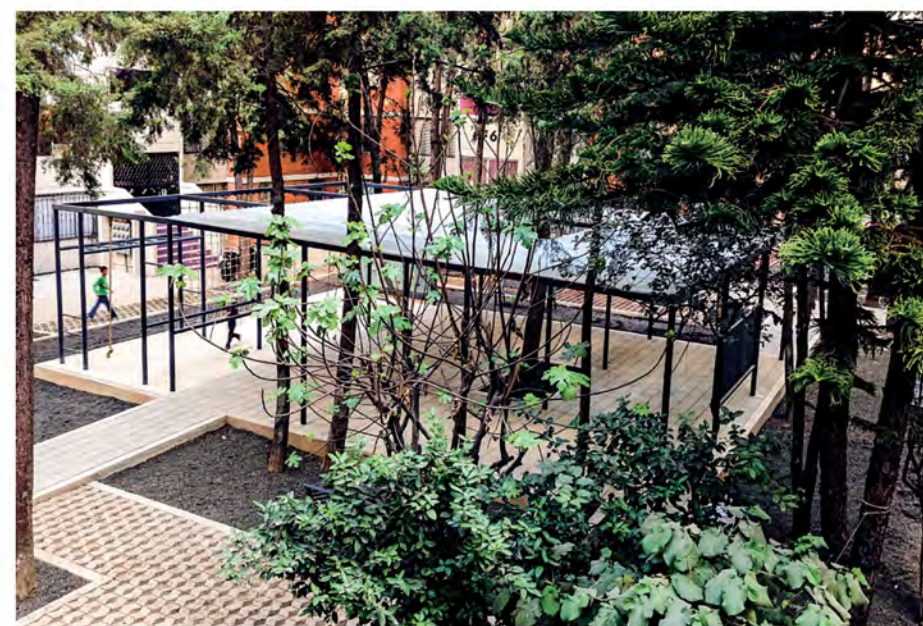
- 剖面圖
Section
1. 附有屋頂的多用途廊道
Multipurposes Roofed modules
 2. 新的鋪地和綠色空間的維護
New pavements and upkeep of green areas
 3. 閱讀室的重建
Reconstruction of the reading room "el saloncico"
 4. 覆蓋原有牆面的壁畫
Murals over existing walls
 5. 運動場
Playgrounds
 6. 照明設施
Lighting
 7. 新長凳和垃圾桶
New benches and trash cans



細部圖 Detailed Sector



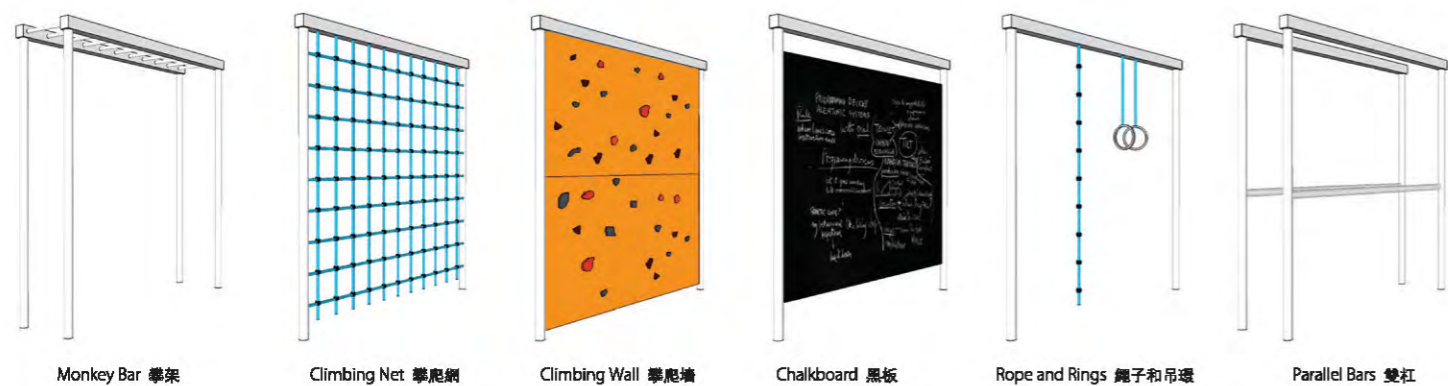
軸測圖 Axonometry



It is a public space rehabilitation project for the Unidad Habitacional San Pablo Xalpa in Azcapotzalco, Mexico City. The unit used to be divided in sectors by walls, fences and barriers built by its inhabitants over time, which did not allow the community to benefit from available public spaces. The goal was to transform a "divided apartment unit" into a "neighborhood COMMON-UNIT" by designing with the community and not just for the community through the implementation of several actions. The project's strategy was to work with the barriers created by its inhabitants: to permeate them, to democratize them and to grant them new meaning in order to create UNITY within the unit.



立面模块 Facade Module



Before, the inhabitants of the unit's different sections recurrently implemented temporary coverings such as tarps in public areas for gatherings and parties, thus managing to extend their private area. By working with them we managed to rescue the idea of covering certain spaces to be used as recreational and socializing areas. Roofed modules were installed and equipped for different activities (blackboards, climbing walls, handrails and nets), which is far better than covering with tarps. The recovered public space became

an extension of each apartment. The strategy turned out to be efficient: people got together to contribute to redesign their unit and the change in public perception achieved was such that the neighbors themselves requested the fences be removed. The space spoke for itself and the unit's inhabitants decided to eliminate all barriers and to profit from exterior spaces thus filling them with public and common life. ■



Credits:
 Client: INFONAVIT –National Trust for Workers Housing Institute-
 Location: Unidad Habitacional San Pablo Xalpa, Delegación Azcapotzalco, Mexico City
 Program: Public Space Rehabilitation
 Project: Rozana Montiel | Estudio de Arquitectura
 Rozana Montiel and Ailin V. Wallach
 Collaborators: Cecilia Brañas | Diana León | Valery Michalon | Luis Galán
 Year of construction: 2015
 Photographs: ©Sandra Pereznieto